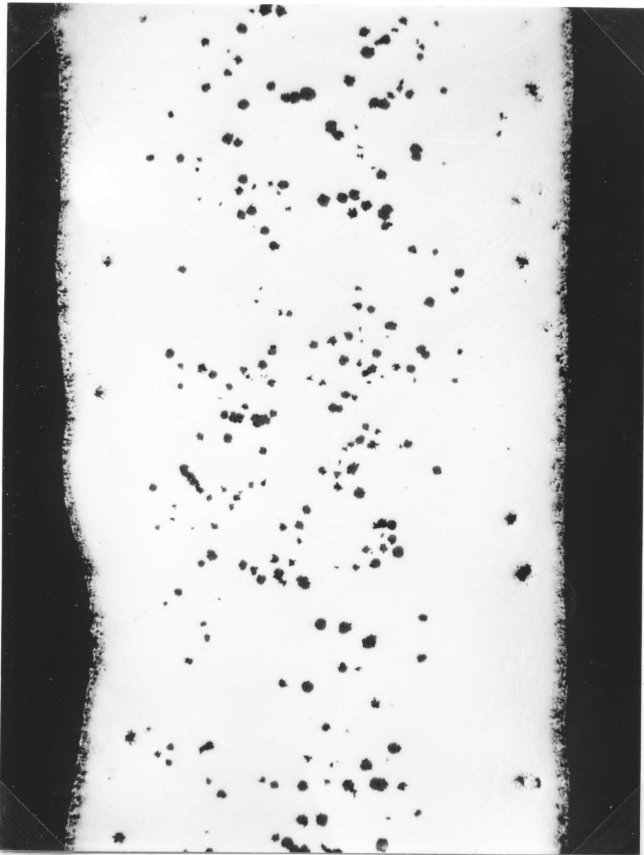
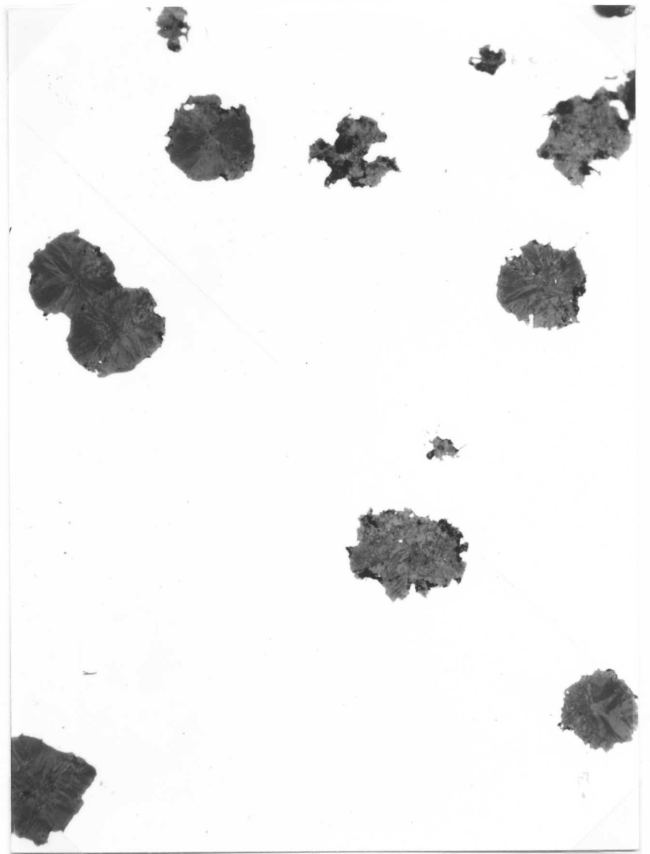


2401: 0.17% Si, ^{<0.03%}~~0.00%~~ Mn, 2.5 mm thick

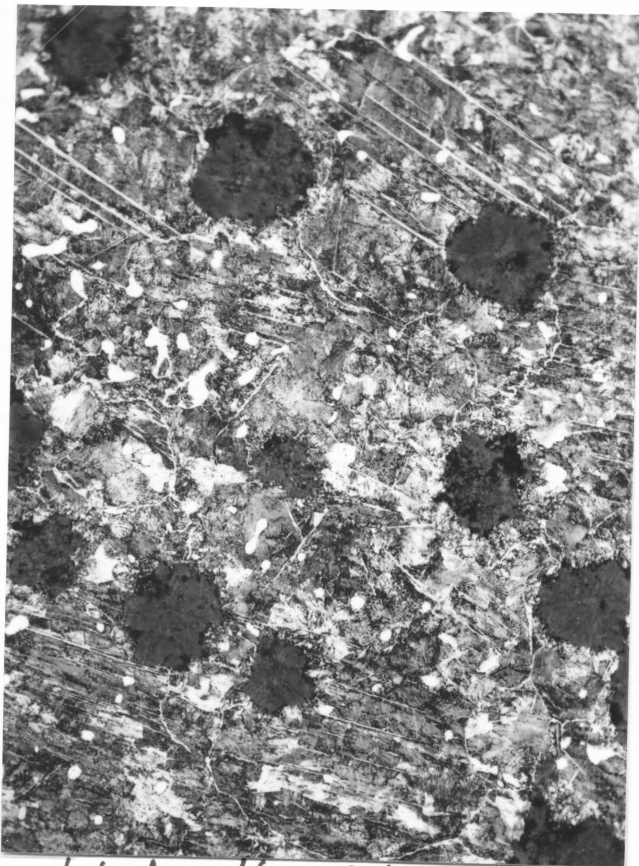
Annealed: 24 hr at 400°C, 3 days at 950°C



unetched, x25



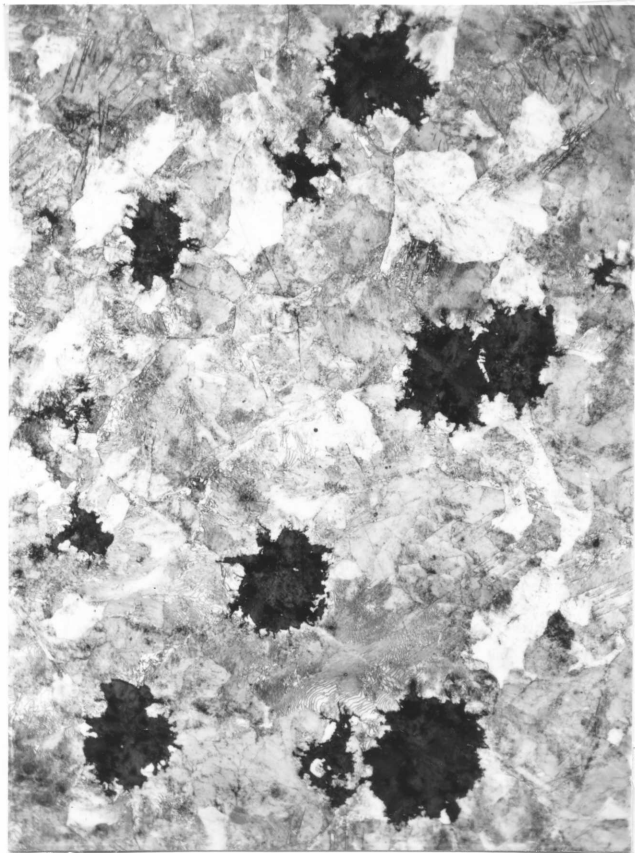
unetched, x25



etched with nital, x250

2411: 0.17% Si, ^{20.03%}~~0.00%~~ Mn, casting head

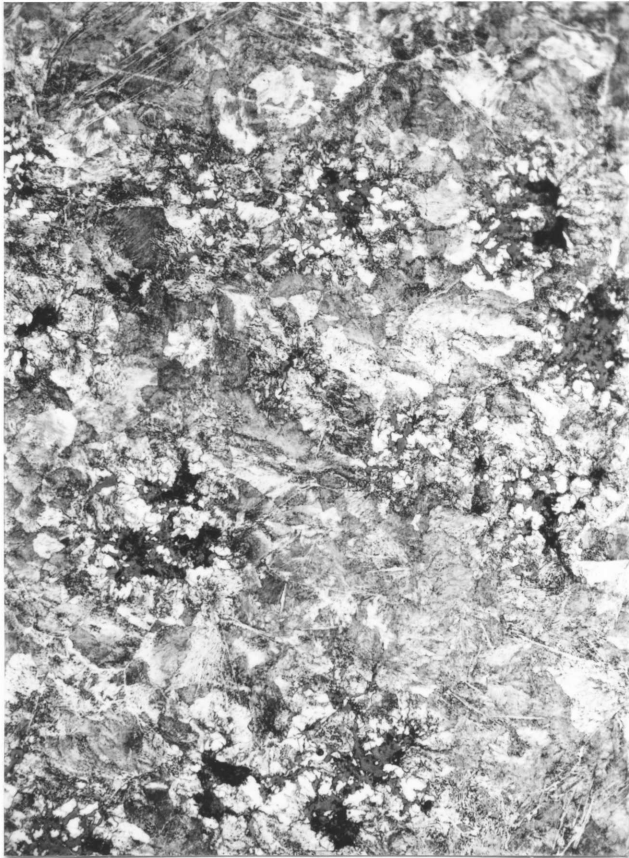
Annealed: 24 hr at 400°C, 3 days at 950°C



etched with nital, x250

2501: 0.17% Si, 0.11% Mn, ~~2.5~~^{2.7} mm thick

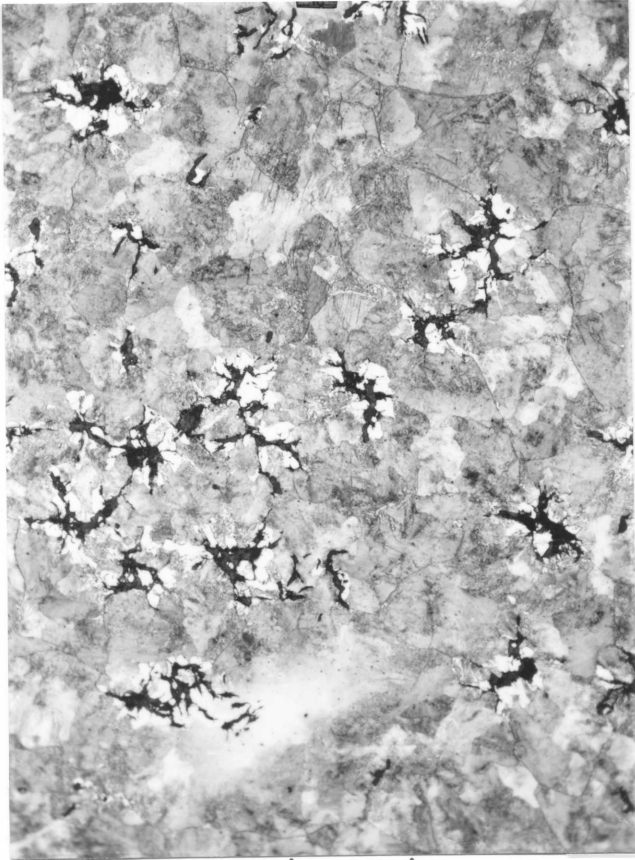
Annealed: 24 hr at 400°C, 3 days at 950°C



etched with nital, x250

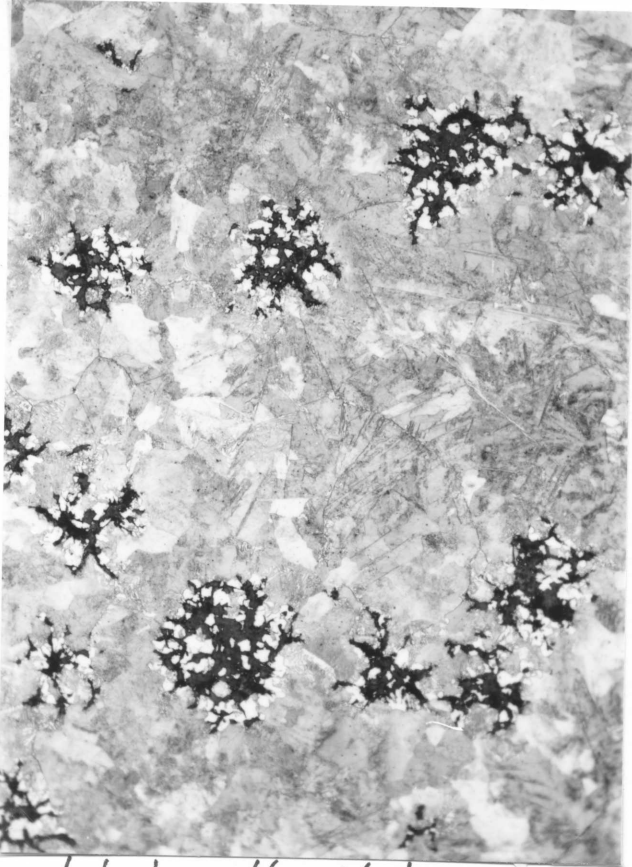
2511: 0.17% Si, 0.11% Mn, casting head

Annealed: 24 hr at 400°C, 3 days at 950°C



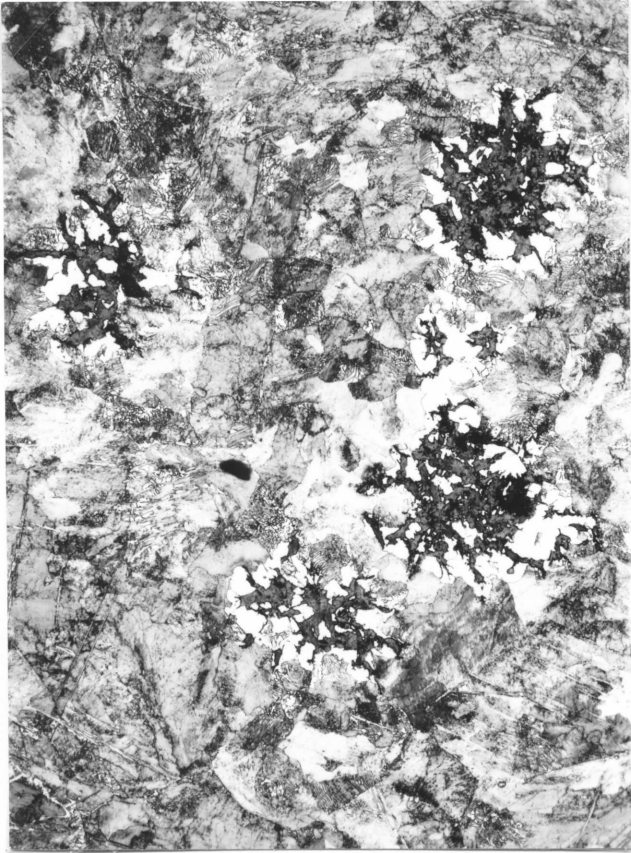
etched with nital, x250

2601: 0.17% Si, 0.22% Mn, ~~2.9~~^{3.1} mm thick
Annealed: 24 hr at 400°C, 3 days at 950°C



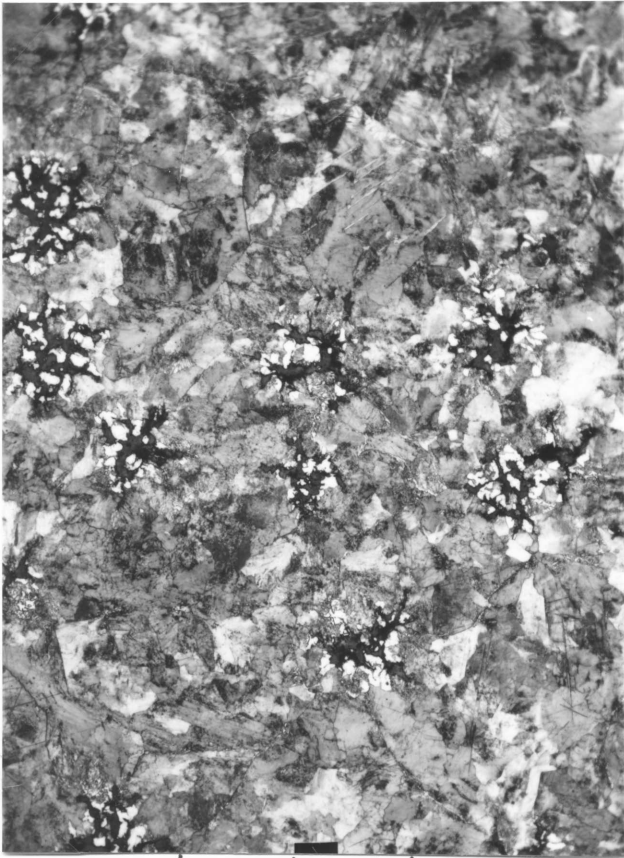
etched with nital, x250

2611: 0.17% Si, 0.22% Mn, casting head
Annealed: 24 hr at 400°C, 3 days at 950°C



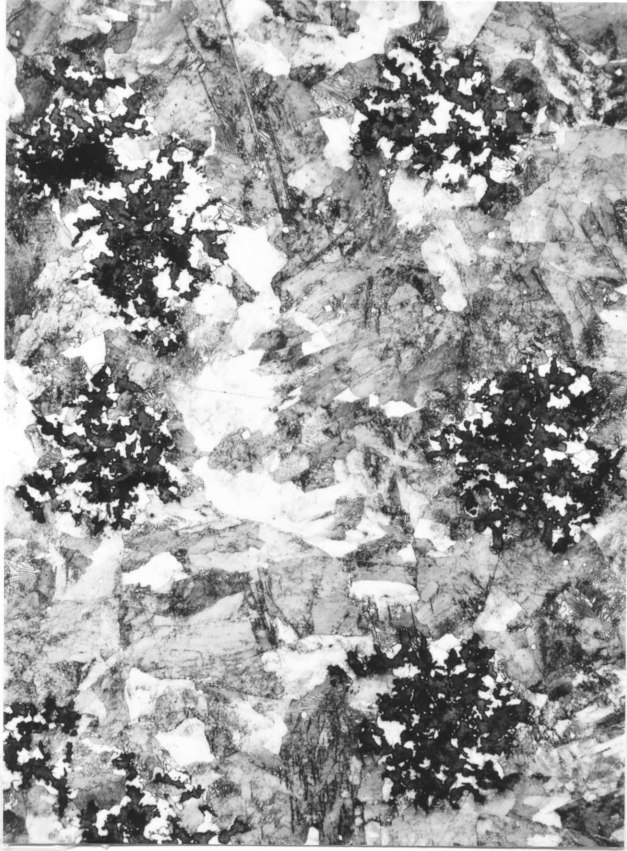
etched with nital, x 250

2701: ^{0.17}~~0.18~~% Si, 0.32% Mn, ^{2.8}~~2.5~~ mm thick
Annealed: 24 hr at 400°C, 3 days at 950°C



etched with nital, x250

2711: ^{0.17}~~0.18~~% Si, 0.32% Mn, casting head
Annealed: 24 hr at 400°C, 3 days at 950°C



etched with nital, x250